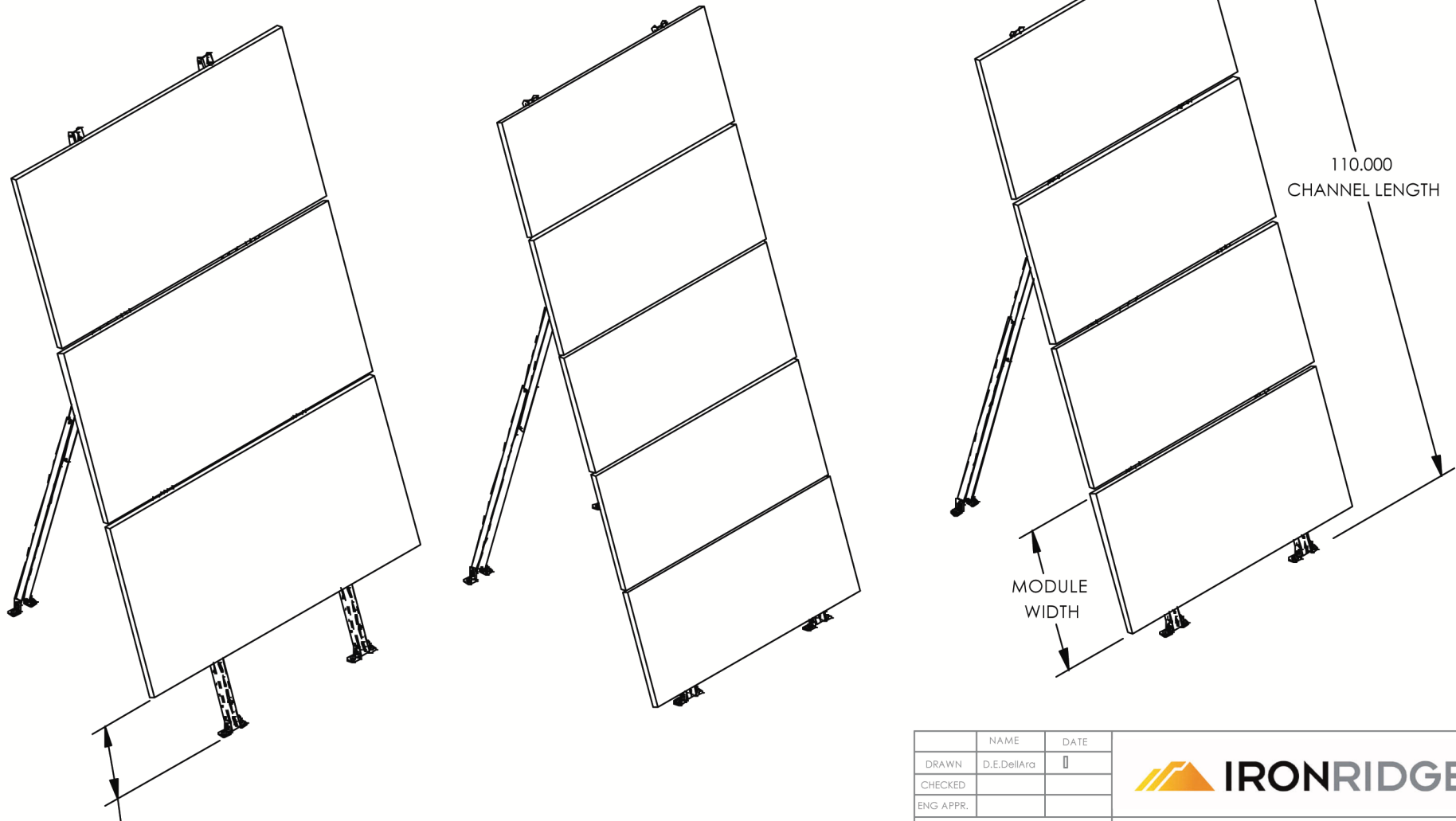


NOTE: OUR MOUNTS CAN HOLD A VARIETY OF DIFFERENT MODULE CONFIGURATIONS AS INDICATED ON THIS PAGE.
 TO VERIFY FIT, DIVIDE THE CHANNEL (MODULE SUPPORT) LENGTH BY THE MODULE WIDTH.
 ALWAYS ALLOW 1-2 INCHES EXTRA CHANNEL LENGTH PER MODULE TO ALLOW FOR CLEARANCE BETWEEN MODULES, ETC.

IE: THIS MOUNT HAS A 110" CHANNEL (MODULE SUPPORT) LENGTH. TO CONFIRM THE FIT FOR A 25.7" WIDE MODULE (KYOCERA FOR EXAMPLE) DIVIDE 110" (THE CHANNEL LENGTH) BY 25.7" (THE MODULE WIDTH) AND IT IS FOUND THAT (4) OF THE KYOCERA MODULES WILL FIT ON A 110" CHANNEL WITH 7.2" EXTRA CHANNEL TO SPARE FOR MODULE CLEARANCE, ETC.

REVISIONS		DATE	APPROVED
REV.	DESCRIPTION		



OPTIONAL
CLEARANCE FOR SNOW, ETC.

	NAME	DATE
DRAWN	D.E.DellAra	
CHECKED		
ENG APPR.		



Instructions, UNI-GR/04A
Supplemental Sheet

SIZE A	DWG. NO. 91-0300-007	REV. B
------------------	-------------------------	------------------

SCALE:1:8

SHEET 2 OF 2

PROPRIETARY AND CONFIDENTIAL

THE INFORMATION CONTAINED IN THIS DRAWING IS THE SOLE PROPERTY OF IRONRIDGE.
 ANY REPRODUCTION IN PART OR AS A WHOLE WITHOUT THE WRITTEN PERMISSION OF IRONRIDGE IS PROHIBITED.

DO NOT SCALE DRAWING